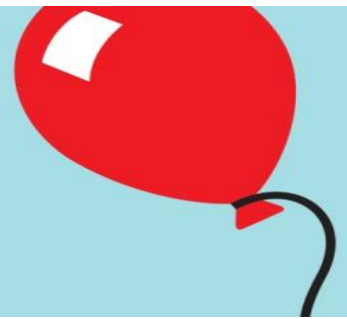


# Balloon Notes

Caring for Your Child

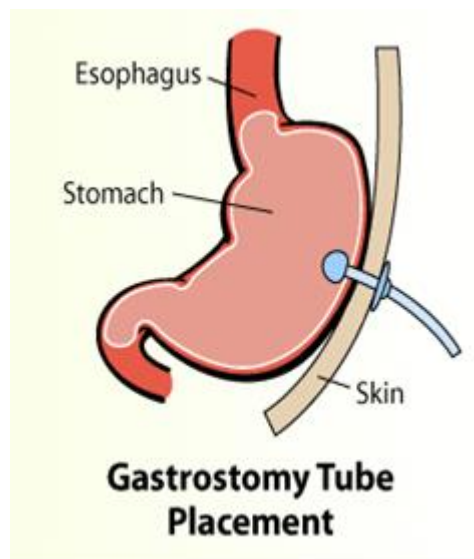
children'shealth<sup>cm</sup>



## Care of a surgically placed Gastrostomy Button



Your child is going home with a special feeding port called a Gastrostomy Button (G-Button). The G-Button is placed for many reasons such as; poor weight gain, trauma, gastroesophageal reflux disease (GERD), and other problems. The G-Button can be placed with a standard surgical procedure, by using a laparoscope or by using an endoscope. Standard surgical placement requires an incision (cut) is made through the abdominal wall into the stomach. Laparoscopic placement uses a special medical tool called a laparoscope and only a small cut is made on the abdomen where the tube is pulled through. Percutaneous placement uses a special medical tool called an endoscope.



These instructions will give you the information you need to take care of your child at home. The nurses will show you how to care for your child and their G-Button. Arrangements will be made for home supplies and any necessary support your child will need. Our goal at Children's Medical Center is to help you feel as comfortable as possible when you care for your child.

### AFTER SURGERY

There are 2 types of G-buttons used at Children's Medical Center: Balloon buttons and Non-balloon buttons. The balloon buttons have an internal balloon that is filled with sterile water which helps hold the button in place inside the stomach. The non-balloon buttons have an internal structure shaped like a mushroom which helps hold the button in place inside the stomach. Special care of a G-button is required during the first 2 weeks after surgery. This special care is to allow the G-Button to heal properly and prevent complications.

The most important thing to remember is that the G-Button dressing should **NOT BE REMOVED** during the first 2 weeks after surgery. **(There may be surgeon specific exceptions to these general guidelines).**

- Your child may have a sponge bath, bathe in the tub with a small amount of water that is below the G-button or cover the G-button when showering. Protect the G-button site from water so it **STAYS DRY**.
- An extension set will be attached to the G-Button. It needs to stay attached during the first 2 weeks after surgery. It is held in place with a clear dressing (Tegaderm) until the 2 week postoperative visit. The Tegaderm may begin to come off. It can either be reinforced with tape or replaced. If it is replaced, it should gently be removed and a new Tegaderm placed so there is no tension on the G-Button itself from the extension set that would cause the button to lean.
- There is no need to clean around the G-button site during the first 2 weeks after surgery as the surgical dressing is to stay in place until the 2 week postoperative visit.
- Do not turn the button during the first 2 weeks after surgery; you will be taught how to do this at the postoperative visit.
- You will be given a booklet on how to care for your child's specific type of button.

## 2 WEEK VISIT

At the 2 week postoperative visit, the surgical dressing and the extension set will be removed. The exit site will be cleaned and proper care of the G-button will be reviewed. There may be steri-strips (white pieces of tape) over the incision; they will fall off over time. **DO NOT** pull them off; let them fall off by themselves. Feel free to ask any questions during this time. Routine gastrostomy skin care can now begin.

## ROUTINE SKIN CARE

The G-button site needs to be cleaned every day with mild soap (any soap without heavy perfumes) and water. The goal is to keep "crusts" from forming around the G-Button. "Crusts" attract germs and lead to infection. When cleaning the site, check the skin for any abnormality: formula leakage, redness, drainage, bleeding, rash, bumps or swelling. **If there is any abnormality seen or you have any concern about the site, call your child's surgeon. If there is any problem with the skin around the G-button or function of the G-button, call the nurse who cares for your child's G-button.** Some children wear a gauze pad or reusable pad around their G-Button. The reusable pad can be home-made or purchased from a company.

## FEEDING

A dietitian and your child's doctor will plan your child's feeding program (formula and schedule). Feeding through a G-Button can be done as:

- Bolus feeding-manual or with a feeding pump.

- Continuous feeding on a feeding pump
- Combination of both

Talk to your child while they are being fed through the G-Button. If possible hold your child during the feeding, but try to keep the child as calm as possible. For infants, allow the child to suck on a pacifier to help them associate sucking with feeding and the sensation of a full stomach.

Information will be given to you depending on what type of feeding program your child is placed on and home equipment will be set up through a Durable Medical Equipment (DME) company.

## MOUTH CARE

Every child needs their gums and any teeth cleaned twice a day, whether they eat by mouth or not. For infants use a soft gauze or cloth and clean water. For older children use a toothbrush and toothpaste, after brushing have the child rinse their mouth with clean water.

## GIVING MEDICATION THROUGH THE G-BUTTON

Give your child their medication as ordered. Some medication is given before a feeding, some is given after a feeding, and some is given at other times. **All medication should be administered to your child through the medication port of the extension set.** After the medication is given, flush the extension set with a small amount of water to clear the line. This makes sure your child receives all their medication.

- **It is best to use liquid medication whenever possible**
- If a tablet is used, it **MUST** be crushed and mixed with water before giving
- **DO NOT** give medication that is in sprinkle form as it can clog the G-Button



## YOUR CHILD'S G-Button

Your child has a \_\_\_\_\_ button.

The brand of button is a \_\_\_\_\_.

The size button is a \_\_\_\_\_ FR, \_\_\_\_\_ cm.

## CONTACTS

- For any problems with the surgery site contact your child's surgeon, the person who placed the G-Button:  
**Surgery Clinic #214-456-6040**
- For any problems with the skin around the G-Button, general G-Button care or G-Button function, contact your child's Advanced Practice Nurse or Wound-Ostomy nurse, (the nurse who cares for the G-Button):  
**Surgery Clinic #214-456-6040 or Gastroenterology Clinic #214-456-8000**
- For well child checkups, immunizations and illnesses, contact your child's Primary Care Provider (PCP)